

Approved Finishing Units (Enhanced) with grazing (AFUE) in England

AFUEs provide a route for cattle farmers to rear, fatten and/or finish calves from TB-restricted and unrestricted sources at grass after an initial period housed in wildlife-proof buildings.

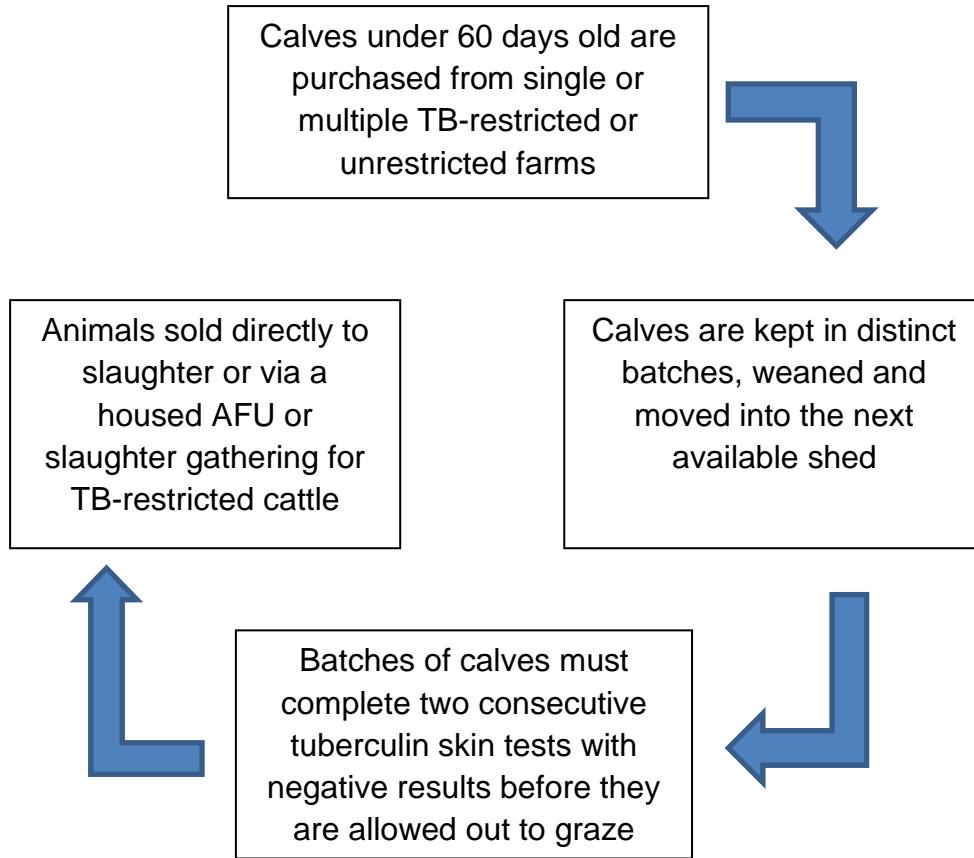
General conditions

- Only approved in the **High Risk Area (HRA)** of England, including in badger control areas
- Calves for the unit can be sourced from **multiple TB-restricted and unrestricted herds** but must be under a certain age, usually **less than 60 days old**
- Calves moving to AFUEs from TB-restricted herds or from an AFU must have completed a skin test with a negative result **within 90 days** before movement (except calves under 42 days old)
- Routine skin testing of all cattle in the unit is carried out at 90-day intervals
- Cattle must have completed **two** consecutive skin tests with negative results before being allowed out to graze on the unit
- **Robust biosecurity requirements** must be in place, including wildlife proofing of buildings / yards
- Cattle can **only move to slaughter**, either directly or via a slaughter gathering for TB-restricted cattle, or another housed AFU

Benefits

- An AFUE provides a **stable business structure**, minimising the effects of a TB breakdown
- **If working in unison with a calf rearer**, it provides both with security, continuity and enables a better product to be created
- AFUEs are a **vital outlet for TB-restricted cattle which require grazing** e.g. for finishing purposes or to meet retailer requirements
- By the dairy industry committing to rearing all calves with care by **2023**, AFUEs will be an important outlet for TB-restricted cattle

Operation of an AFUE



Where can I find out more information?

An application form and the full terms and conditions for approval and operation of an AFUE can be found at <https://www.gov.uk/government/publications/approved-finishing-unit-enhanced-with-grazing-for-cattle-application>

Further information is also available at www.tbhub.co.uk

Who should I speak to?

If you are considering applying for an AFUE please contact APHA on

 03000 200 301

or email TB.Advice@apha.gov.uk